

Friday 3rd December 2021

School Opens at 8.45 am

Registers close at 8.55 am

(Gates will be locked at this time and pupils arriving after this will be signed in late at the school office) Lessons end at 3.20 pm

A Gentle Reminder to Parents and Carers

In line with continued Covid restrictions, Parents are kindly asked to please refrain from entering the school without prior arrangement with your child's class teacher.

We thank you for your co-operation during continued restrictions.

🌟 Headteacher's Award 🌟

GC
JACOB G

CE
ZIAH O

ED
STEPHEN M

CW
JACK H

RN
AMELIA T

DB
NICOLLE M

LSM
ALICE R

SH
CHLOE C

EL
JOEY B

LST
CHARLOTTE B

JT
MAISY B-S

GOLDEN TICKET WINNERS FOR THIS WEEK

GC
LEO C

CE
IRIS W

ED
ARCHIE B-S

RN
COHEN Y

CW
MYA G

SH
JAKE H

SH
THEO H

DB
ALBERT C

Dates for Your Diary

Monday 6th December

Y4 PE Session

Y4 Mr Birch and Mrs Smith Classes only
Please come in your PE Kits to replace your cancelled swimming lesson

Friday 10th December

School Flu Vaccines

Christmas Jumper Day (All proceeds to Save the Children – suggested donation £1)

Dance Club
3.30-4.30

Wednesday 15th December

Xmas Dinner for Pupils – See menu

Friday 17th December

School closes for Christmas
12:20 Reception and KS1
12:30 KS2

Tuesday 4th January 2022

INSET Day – School closed for pupils:

Wednesday 5th January 2022

School opens for pupils

A reminder of recent guidance due to rising cases of Covid-19 in the 5-10 age group in the locality.

- If your child develops symptoms of a high temperature, new persistent cough and a loss of smell / taste then you should immediately book a PCR test, keep your child off school with your child returning as soon as receiving a negative result and being well enough.
- If your child is a close contact to a positive case (e.g. within a household) you should immediately book a PCR test and keep your child off school. Your child can return to school as soon as receiving a negative result. The use of regular LFT tests in this case could also support the attendance of your child. However, if your child subsequently becomes symptomatic you should seek to retest your child with a PCR.
- We would strongly advise that if your child has a high temperature / headache / cough that you also seek a PCR and follow the above procedures.

Whilst this is only guidance, we would appreciate parents working with the school to ultimately protect the wider picture of attendance across the school.

DJ Mollie

Coton Green Primary School has its very own DJ -
Tune in every Saturday night to
[twitch.tv/djmollieLewis](https://www.twitch.tv/djmollieLewis) at 7.00 pm – 8.00 pm to
listen to Mollie spinning her decks playing hits
from the 80s and 90s

**Forest Schools in Mr Birch and Mrs Holbrook's
Class**

Mrs Smith

Mrs Smith (Maple) Tuesday 23rd November
Mr Birch (Rowan) Tuesday 23rd and Tuesday 30th
November
Mrs Holbrook's class (Beech) Wednesday 24th
November and Wednesday 1st December

Polite Request: KS1 Children.

Could you please not send toys from home with your children as this is causing unnecessary problems during playtime and lunch times in particular.

If your child has an attachment to a particular toy, please speak to or email your child's teacher regarding this.

Year1and2@cotongreen.staffs.sch.uk

Thank you for your understanding in this matter.

Mr R Newton
KS1 Lead

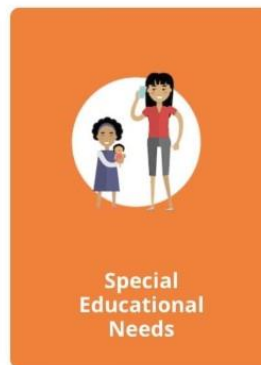
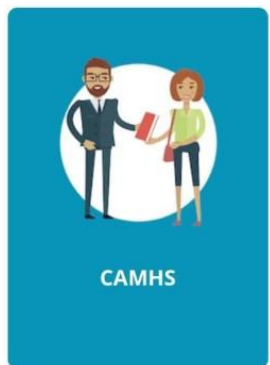
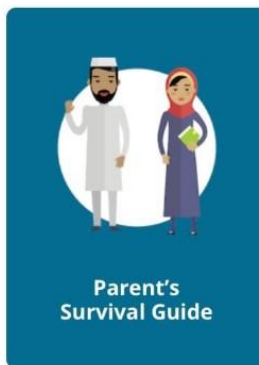
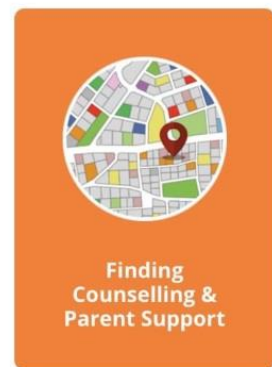
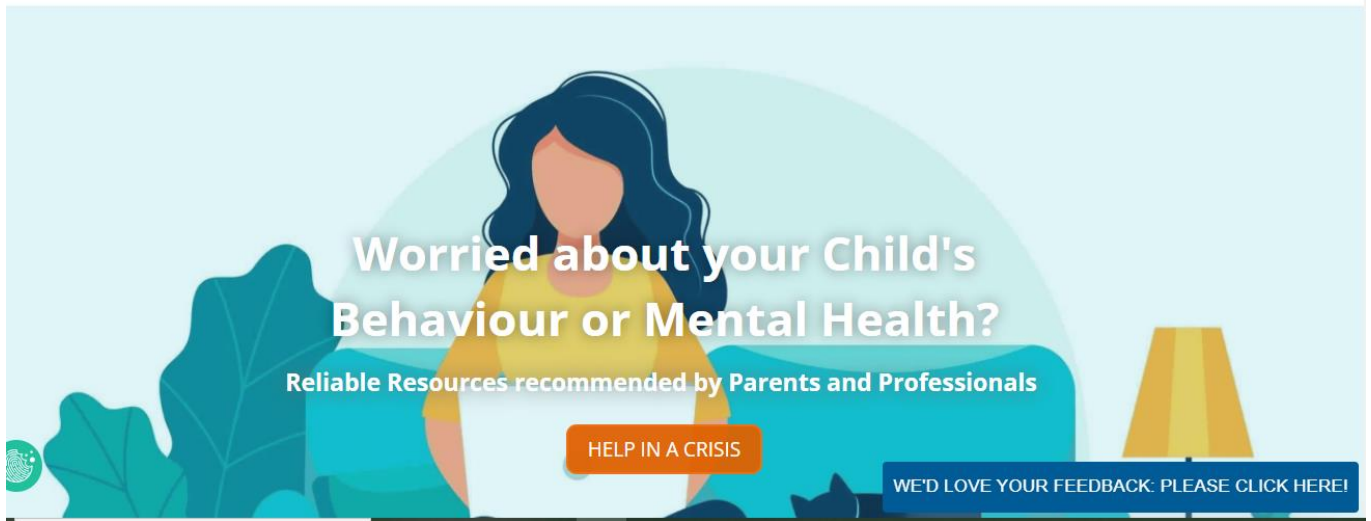
E-Safety and WhatsApp – Year 5 and 6

After addressing some issues in school regarding children sharing information on the 'WhatsApp' platform; it has been disappointing to find reports of a significant minority of children now setting up sub-groups, making unkind comments about their peers and using bad language.

I have addressed the children directly in class today and defined what constitutes bullying behaviour online and what to do if they see it.

School strongly encourages parents to check the groups that Year 5 and 6 children are posting in and that your child is using this platform appropriately.

Thank you for your assistance in this matter.
Mr R Osborne



The above website has been highly recommended as a useful resource for parents. Testimonials have been very encouraging in giving parents tools and advice to address behaviours and conditions such as anxiety. We hope you find this of good use.

If you have any feedback from using these resources or would like more information, then please contact: pastoral@cotongreen.staffs.sch.uk FAO: Mr Pegg

Mrs Pegg – Pastoral Support

COTON GREEN PRE-SCHOOL NURSERY

Please see below for the dates and times of the Pre-School Stay and Play sessions



Coton Green Pre-School Nursery
STAY AND PLAY

Date & Times - Wednesdays 1:15pm - 2:45pm
Price - £1.50
Age - 0-4 years



Craft and messy play
—
Snack time
—
Stories and songs
—
Make new friends
—
Help your child learn through play

COTON GREEN PRE-SCHOOL NURSERY
(WITHIN THE GROUNDS OF COTON GREEN PRIMARY SCHOOL)
Kipling Rise
Coton Green
Tamworth
Staffordshire
B79 8LX
Tel: 01827 337464
www.cotongreennursery.co.uk
cotongreenpreschoolnursery@yahoo.co.uk

KS2 (Y3-6)

Children in these year groups can bring in money to purchase snacks at morning break. For the moment KS1 will continue with their free fruit options until we can incorporate them at the same time.

We ask that you are patient with school as we try to open up this facility for all our children again.

Snacks and drinks are listed below and purchased with cash only please

Morning Break Sales

Toast	30p	Veggie Stick	30p
Cheese on Toast	60p	Jam on Toast	35p
Tea Cake	35p	Half Bagel (toasted)	30p
Half Cheese Bagel	45p	Oatcake with Cheese	60p
Fruit Pot/Veggie Pot	35p	Crumpet	35p
Veggie Sticks	35p	Scotch Pancakes	35p
Small Water	30p	Fresh Milk	25p
Flavoured Milk	60p	Orange Shot 85ml	40p
Orange & Apple Juice	35p	Hot Chocolate	50p

Coton Green Primary School Dates 2021-22

Autumn Term 2021

Holiday: Monday 11 April – Friday 22 April

Easter Sunday: Sunday 17 April

Summer Term 2022

Term ends: Friday 22 July 2022

Holiday: Monday 25 July – Friday 2 September

May Day: Monday 2 May

Half Term: Monday 30 May – Friday 3 June

Inset day: Friday 1 July (School Focus)

Term ends: Friday 22 July 2022

Holiday: Monday 25 July – Friday 2 September

Inset day: Thursday 2 September (School Focus)

Inset day: Friday 3 September (School Focus)

Term starts: Monday 6 September

Inset day: Friday 22 October (School Focus)

Half Term: Monday 25 October – Friday 29 October

Inset day: Monday 29 November (ATLP Focus)

Term ends: Friday 17 December

Holiday: Monday 20 December – Monday 3 January

Spring Term 2022

Inset day: Tuesday 4 January (ATLP Focus)

Term starts: Wednesday 5 January

Inset day: Friday 18 February (ATLP Focus)

Half Term: Monday 21 February – Friday 25 February

Inset day: Friday 8 April (ATLP Focus)

Term ends: Friday 8 April



Christmas Dinner Menu

Wednesday 15th December

Tasty Mains

Tasty Turkey with pigs in blankets
Or

Quorn Roast with Quorn Sausage
Served With
Roast Potatoes, Stuffing Balls & Gravy

Scrummy Veggie Sides

Peas, Carrots and Brussel Sprouts

Yummy Desserts

Christmas Shortbread Biscuits
Or Ice Cream



Don't forget, school meals are free for all children in Reception, Years 1 or Year 2!

To sign up for this tasty theme day menu, please speak to your school.



*** Please remember school meals for KS2 now cost £2.35 per day ***

Please order your preferred meal choices using the menu below or collect one from your child's class.

Can we ask parents in KS2 to please ensure that their children only order meals that they will be eating, as any meals ordered and not taken will still be charged by the kitchen.

Thank you for your co-operation

We will be using Week 3 Menu Options this week



MAIN MENU

Name			Class	Week 3
<i>Monday</i>	Macaroni Cheese (v)	Veggie Sausage Mash with Gravy (v)	Jacket Potato with Assorted Fillings	Ham or Cheese Sandwich Cucumber Sticks Tray Bake
<i>Tuesday</i>	Veggie Balls in a Tomato Sauce (v)	Garlicky Chicken Served with Potatoes	Jacket Potato with Assorted Fillings	Ham or Cheese Sandwich Carrot Sticks Tray Bake
<i>Wednesday</i>	Roast Pork With Roast Potatoes, Vegetables and Gravy	Quorn Roast (v) With Roast Potatoes, Vegetables & Gravy	Jacket Potato with Assorted Fillings	Ham or Cheese Sandwich Cherry Tomatoes Tray Bake
<i>Thursday</i>	Beef Burrito	Vegetable Lasagne	Jacket Potato with Assorted Fillings	Ham or Cheese Sandwich Cucumber Sticks Tray Bake
<i>Friday</i>	Southern Fried Chicken Tasters and Chips	Soft Taco (V) and Chips	Jacket Potato with Assorted Fillings	Ham or Cheese Sandwich Carrot Sticks Tray Bake
Subject to availability				



ALLERGY AWARE MENU

Name		Class	Week 3
<i>Monday</i>	SD Tomato Pasta With Plain Wedges (v)		Jacket Potato with Baked Beans or Cheese
<i>Tuesday</i>	Garlicky Chicken With Potatoes		Jacket Potato with Baked Beans or Cheese
<i>Wednesday</i>	Roast Pork Roast Potatoes, Vegetables & SD Gravy		Jacket Potato with Baked Beans or Cheese
<i>Thursday</i>	SD Beef Burrito		Jacket Potato with Baked Beans or Cheese
<i>Friday</i>	SD Fish Fillet And Chips		Jacket Potato with Baked Beans or Cheese
Subject to availability			