

23rd March 2020

Dear Coton Green Learning Family,

It is with great sadness that tonight we have closed the school to almost all pupils. It has been a day of mixed emotions. We are really proud of the positive attitudes that your children have shown over the last few days of uncertainty but now we have had to wave children goodbye knowing we won't be seeing them for a while.

These are worrying times and I understand people's frustrations. However, I would like to thank people in their efforts to organise alternative childcare solutions to enable us to provide childcare for the frontline workers.

More information will follow over the next week about keeping children safe and our teachers are organising ways in which learning can continue. We will be working on points of contact for teachers, parents and pupils.

For more information on the enforced school closure please visit:

<https://www.gov.uk/government/publications/closure-of-educational-settings-information-for-parents-and-carers/closure-of-educational-settings-information-for-parents-and-carers>

Thank you for all your support and for your patience at this difficult time. Be safe.

R.Osborne

Class of the Week



9th – 13th March 2019

Mrs Holbrook– 99.66%

(Whole school attendance for the week: 96.31%)
(Whole School current attendance: 95.92%)

Headlice

We have had reports of headlice in school.
Please check your children's hair on a regular basis.

Thank you

Sport Relief

Last Friday we held a dress as your sporting hero day. Throughout the day everyone ran, jogged or walked the sport relief mile.

We raised £160.39

Thank you

Film Night

PTFA would like to thank everyone for the continued help and support.

Everyone had a fantastic night.

We raised £431.51

CORONAVIRUS: PUBLIC INFORMATION

The Government and NHS are well prepared to deal with this virus.

You can help too.

Germs can live on some surfaces for hours.

To protect yourself and others:

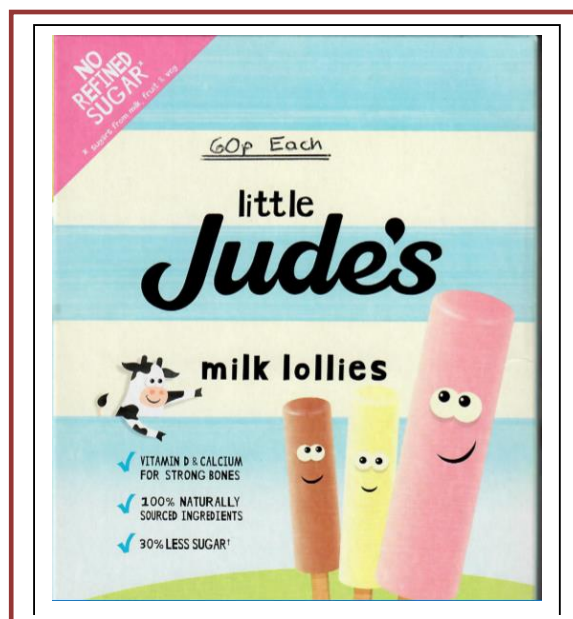
- Always carry tissues with you and use them to catch your cough or sneeze.
- Bin the tissue, and to kill the germs, wash your hands with soap and water, or use a sanitiser gel.
- If you have arrived back from China within 14 days follow the specific advice for returning travellers.

This is the best way to slow the spread of almost any germs, including Coronavirus.

[Find out more at gov.uk/coronavirus](https://www.gov.uk/coronavirus)

Morning Break Sales

Cheese on Toast	60p	Jam on Toast	35p
Tea Cake	35p	Half Bagel (toasted)	30p
Half Cheese Bagel	45p	Oatcake with Cheese	60p
Fruit Pot/Veggie Pot	35p	Crumpet	35p
Veggie Sticks	35p	Scotch Pancakes	35p
Small Water	30p	Fresh Milk	25p
Flavoured Milk	60p	Orange Shot 85ml	40p
Orange & Apple Juice	35p	Hot Chocolate	50p
	30p	Veggie Stick	30p



Lunch Reminder

Lunch will be provided for those children who will be attending school

Junior Bake Off 2020

My name is Lucy and I'm a Casting Researcher at Love Productions; the company behind The Great British Bake Off, The Great British Sewing Bee and The Great Pottery Throw Down.

We are delighted to say, that we have recently opened applications for the 6th series of **Junior Bake Off**; a Channel 4 programme that celebrates the culinary talent and ambition of the younger generation in Britain.

We are looking for young budding bakers between **9 - 15 years old**.
Filming would take place from July 2020, but our **applications close on Sunday 5th April 2020**.

Interested bakers can apply online at - WWW.APPLYFORJUNIORBAKEOFF.CO.UK



Best wishes,
The Junior Bake Off Team

enquiries: applyforjuniorbakeoff@loveproductions.co.uk



Coton Green Primary School – School Terms and Holiday Dates
Spring Term 2020 to Autumn Term 2020

Spring Term 2020

Inset Day 4: Monday 6 January **(Staff Only)**

Term Starts: Tuesday 7th January

Half term: Monday 17 February - Friday 21 February

Term ends: Friday 3 April

Holiday: Monday 6 April - Friday 17 April

Easter Sunday: Sunday 12 April

Summer Term 2020

Term starts: Monday 20 April

May Day: Friday 8th May

Half term: Monday 25 May - Friday 29 May

Inset Day 5: Monday 20th July **(Staff Only)**

Holiday: Tuesday 21 July - Monday 31 August

Autumn Term 2020

Inset day 1: Tuesday 1 September **(Staff Only)**

Term starts: Wednesday 2 September

Half term: Monday 26 October - Friday 30 October

Term ends: Friday 18 December

Holiday: Monday 21 December - Friday 1 January