

23rd April 2018



Headteacher's Award



Friday 20th April 2018

GC Elder <i>Cyprian K</i>	DB Birch <i>Matthew S</i>	LS Beech <i>Archie S</i>	RN Holly
CE Chestnut <i>Abigail C</i>	SHU Hazel <i>Harry R</i>	LSm Rowan <i>Adam C</i>	JT Ash <i>Taylor B</i>
	SH Maple <i>Thomas D</i>	CW Hawthorne <i>Maisie D</i>	GT Sycamore <i>Jake S</i>



Class of the Week
26th – 29th March 2018

Miss Stephenson's – 99.17%
(Whole School Attendance for the week: 97.03%)
(Current Whole School Attendance: 96.47%)



MONDAY 23rd April

SWIMMING – Y5

Please do not forget your swimming kit!



**Monday
Y3 Violins**

**Please do not forget
your violin!**

Extra-Curricular Clubs

REMINDER

Can parents please use KS1 and KS2 playground entrances when collecting their children, as previously advised.

Thank you

Upcoming Dates

Monday 23rd April

Y5 Swimming

23rd April – 4th May

BIG PEDAL

Tuesday 24th April

PTFA KS1 Film Night

Thursday 26th April

PTFA KS2 Film Night

Tuesday 1st May

Photos

EYFS Graduation, Groups (Class groups, Sport, Music Y6 Leavers)

Tuesday 22nd May

Y5 Gifted & Talented

Wednesday 23rd May

PTFA School Disco

Friday 25th May

School Closes for ½-term

Monday 4th June

School re-opens

Tuesday 19th June

Y6 Visit

Wednesday 20th June

PTFA Ladies Night

Wednesday 27th – Friday 29th June

QEMS Induction

Friday 6th July

PTFA Summer Fayre

EXTRA CURRICULA ACTIVITIES

	Lunchtime	Afterschool
Monday	Netball Club Y5/6	
Tuesday	Netball Club	
Wednesday	Running Club KS2 / Netball Club	Aston Villa KS1 (2 of 6)
Thursday		Library Club 3.30 pm – 4.00 pm Sing Up
Friday		



From w/c 16/04/2018 – Price Increase

Morning Break Sales

Toast	30p	Veggie Stick	30p
Cheese on Toast	60p	Jam on Toast	35p
Tea Cake	35p	Half Bagel (toasted)	30p
Half Cheese Bagel	45p	Oatcake with Cheese	60p
Fruit Pot/Veggie Pot	35p	Crumpet	35p
Small Water	30p	Flavoured Milk	60p
Orange Shot 85ml	40p	Tropicana 150ml	35p
Hot Chocolate	50p	Milk Drink	25p



Tuesday 1st May

School Photos

- Class Groups
- Graduations
- Leavers
- Music & Sports Teams

Coton Green Primary School – School Terms and Holiday Dates 2018/2019

Autumn Term 2018

Staff: Monday 3 September **Inset Day:1**

Pupils: Tuesday 4 September

Staff: Friday 26th October **Inset Day: 2**

Holiday: Monday 29 October - Friday 2 November

Staff: Monday 5th November **Inset Day: 3**

Term ends: Friday 21 December

Holiday: Monday 24 December - Friday 4 January

Spring Term 2019

Term starts: Monday 7 January

Half term: Monday 18 February - Friday 22 February

Term ends: Friday 12 April

Holiday: Monday 15 April - Friday 26 April

Easter Sunday: Sunday 21 April

Summer Term 2019

Term starts: Monday 29 April

May Day: Monday 6 May

Half term: Monday 27 May - Friday 31 May

Term ends: Monday 22 July **Inset Day: 4**

Holiday: Tuesday 23 July - Friday 30 August

There is 1 other Inset day to be confirmed.

Staff Total: 195 days Pupil Total: (pupils are required to attend for 190 days)

(Monday 3rd September 2018 is already fixed as an Inset day and the other four days are to be identified by schools. Coton Green Primary have worked with other schools to try and align our Inset days where possible.

Coton Green Kids' Zone

Monday to Friday

8.00 am – 8.45 am and 3.30 pm – 5.30 pm

If you wish to arrange a long term booking in advance, please call in to the school office

- ❖ Breakfast Club £3.25 per day
- ❖ After School Club £7.00 per day
- ❖ Both (wrap around care) £10.00 per day
- ❖ Sibling rate for wrap around care £9.00 per day

Please complete the booking form and send in to the school office the week before do avoid disappointment.

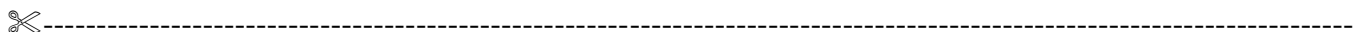
Payment via ParentPay please.

Booking forms are available from either the school office or Play Leader

Lunch Reminder

Please complete your menu choice for the week on a Monday morning to avoid disappointment.

Thank you



** NEW SUMMER MENU **

Week Commencing 23 rd April 2018		Week 3		
Child's Name:		Class:		
<i>Monday</i>	(v) Vegetable Supreme Pizza with Jacket Wedges & Carrot Batons Choice of Fresh Seasonal Salads	(v) Vegetarian Bolognese with Carrot Batons Choice of Fresh Seasonal Salads	Jacket Potato with a choice of filling	Assorted Sandwiches
<i>Tuesday</i>	Creamy Chicken Curry, Wholegrain Rice & Broccoli Choice of Fresh Seasonal Salads	(v) Vegetable Lasagne with Broccoli Choice of Fresh Seasonal Salads	Jacket Potato with a choice of filling	Assorted Sandwiches
<i>Wednesday</i>	Roast Turkey with Roast Potatoes, Gravy & Broccoli Choice of Fresh Seasonal Salads	(v) Shepherdess Pie with Gravy & Broccoli Choice of Fresh Seasonal Salads	Jacket Potato with a choice of filling	Assorted Sandwiches
<i>Thursday</i>	Pasta Bolognese With Roasted Mediterranean Vegetable Choice of Fresh Seasonal Salads	(v) Mild Potato & Chickpea Curry with Rice & Roasted Mediterranean Vegetables Choice of Fresh Seasonal Salads	Jacket Potato with a choice of filling	Assorted Sandwiches
<i>Friday</i>	Salmon Fish Fingers or Golden Fish Fingers with Chips, Carrot Batons, Peas, Baked Beans Choice of Fresh Seasonal Salads	(v) Quorn Sausage & Tomato Pasta Bake, Carrot Batons, Peas, Baked Beans Choice of Fresh Seasonal Salads	Jacket Potato with a choice of filling	Assorted Sandwiches
Subject to availability				